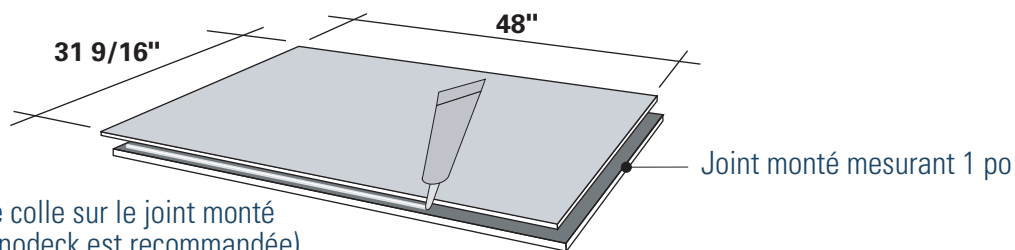
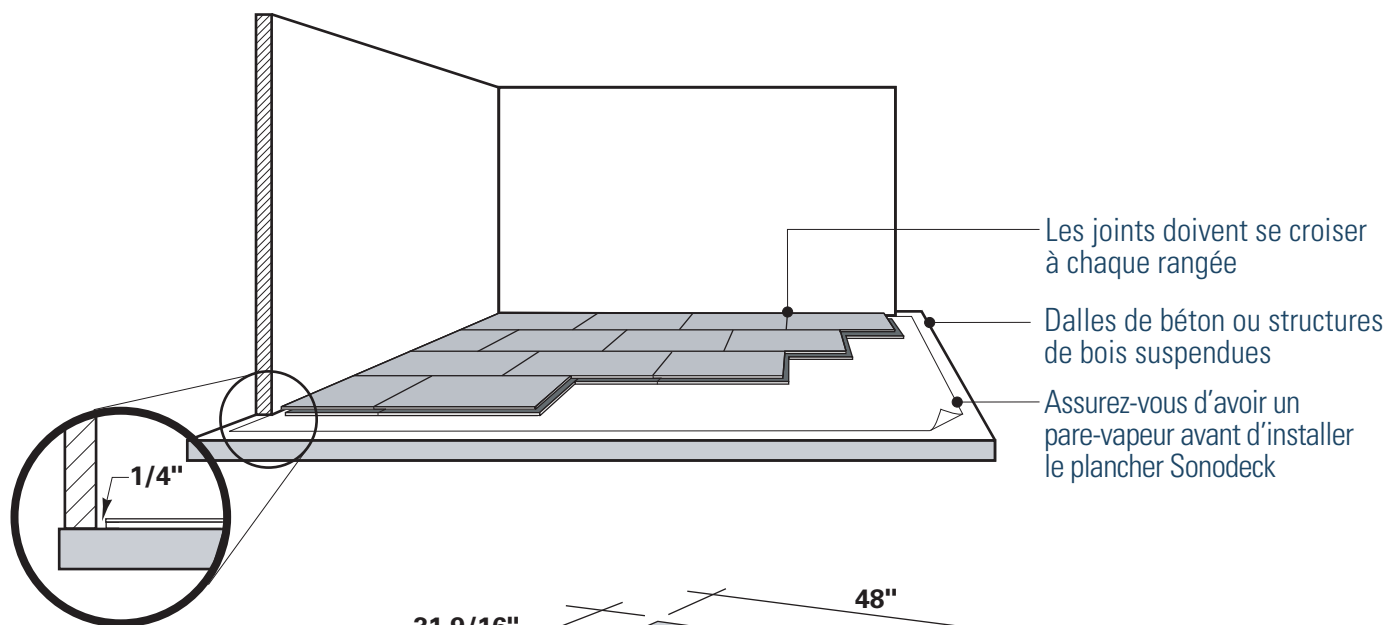
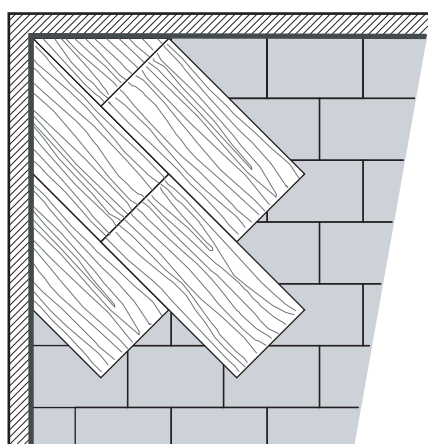


Sonodeck

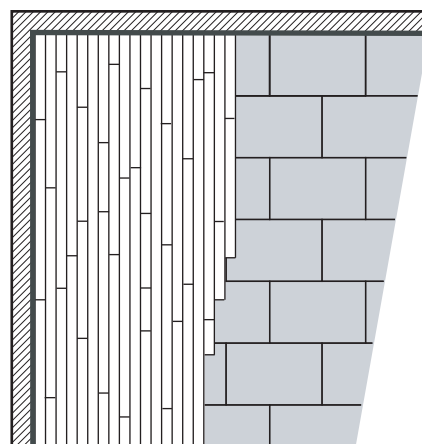
Guide d'installation



Goutte de colle sur le joint monté
(La colle Sonodeck est recommandée)
Utilisez un support mécanique sur le
joint monté pour fixer le panneau
(clous ou vis de 3/4 po)



Sous-couche supplémentaire

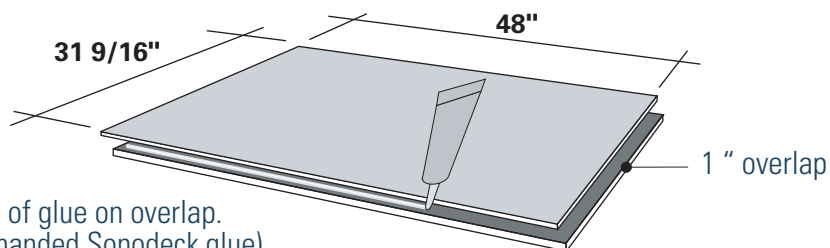
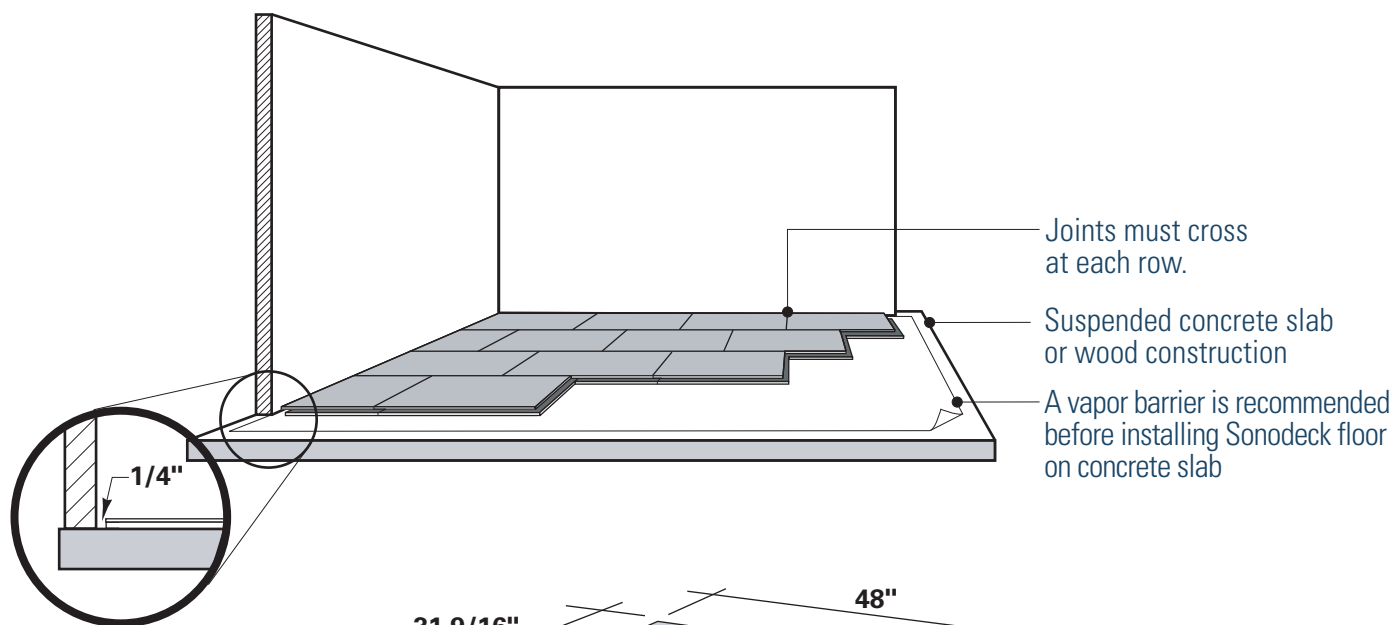


Installation de plancher en bois franc

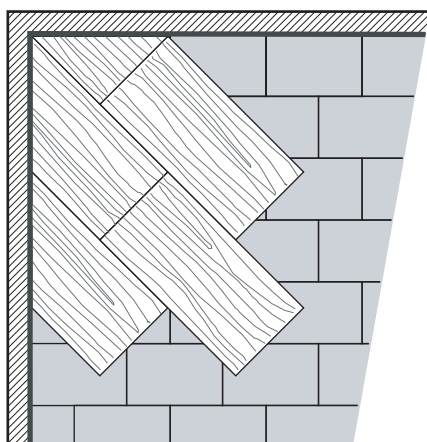
Aux fins d'entreposage, assurez-vous d'étendre les panneaux Sonodeck par terre (ne pas placer à la verticale contre un mur ou tout autre objet)

Sonodeck

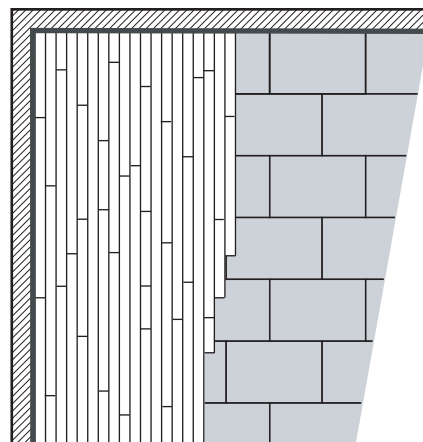
Installation Guide



Bead of glue on overlap.
(Recommended Sonodeck glue)
Use mechanical support on overlap to secure panel.
(3/4" nails or screws)



Additional underlayment



Hardwood floor installation

It is important to store the Sonodeck panels flat on the floor (do not store them in a vertical position against a wall or other objects)