

InsulFloorBoard

INSULATING FLOORING SYSTEM FOR BASEMENT
SYSTÈME DE PLANCHER ISOLANT POUR SOUS-SOL



INSTALLATION GUIDE

Please read the instructions carefully before beginning your project.

IMPORTANT NOTICE: DO NOT UNPACK THE BOARDS BEFORE BEING READY FOR INSTALLATION. If the unpacked boards are not installed the same day, it is important to store them flat on the floor (do not store them in a vertical position against a wall or other objects).

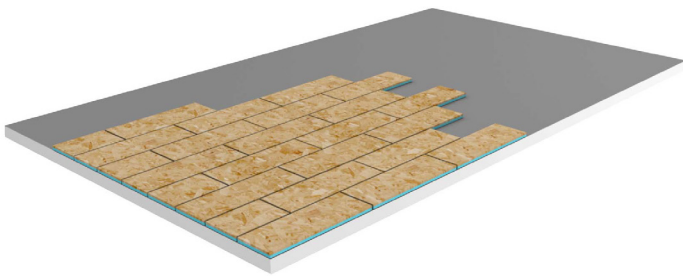
Characteristics of the InsulFloor system

Unlike other sub floor systems, InsulFloor allows you to install a whole range of flooring over it, such as carpet, tiles, linoleum, ceramic, hardwood, floating floor, parquet, marble or granite.

Quantity estimate

Calculate the surface in square feet, allowing approximately 5% of a loss according to the cuts you are going to make. One package of panels covers a surface of 20.5 square feet. Calculate the surface to cover and add the percentage of loss. Take the total surface obtained and divide by 20.5, which corresponds to a package of panels. You will thus obtain the number of packages necessary for your project.

The InsulFloor panels must be kept in place with the help of glue sticks recommended by the manufacturer such as PL Premium Lepage. This adhesive is available in tubes of 825 ml which covers approximately 150 square feet, or in tubes of 310 ml which covers approximately 60 square feet. Consult your local merchant for the recommended adhesive and necessary number of boxes of InsulFloor panels.



Guarantee

InsulFloor is guaranteed for life against all manufacturing defects. Defective material should be returned to the manufacturer and will be replaced without cost.

INSTALLATION INSTRUCTIONS

Tools needed

Measuring tape, chalk line, circular saw, rubber mallet and caulking gun for the glue.

2 choice of installation :

Option 1 : Floating installation

This installation is possible if you want to install a floating floor or carpet. For this option only stick the joints with wood glue and ignore point 3.

Option 2: Fixed installation

This installation is required if you want to install a hardwood floor or ceramic. Follow the installation instructions.

1 Preparing the concrete

- 1.1 Clean the surface properly and remove debris and/or dust.
- 1.2 The area should be neither wet nor humid.
- 1.3 Visually inspect the floor for holes or bumps that could affect installation of the sub-floor. Slight imperfections of less than 1/4" will not affect the stability or durability of your new sub-floor. Larger holes or bumps should be repaired using the proper floor-levelling compound.
- 1.4 In the case of new housing, we recommend waiting approximately 60 days prior to product installation.

2 Installing the first row

- 2.1 Choose the longest straight wall for the first row of panels.
- 2.2 Place a panel at each extremity of the wall. The female part should be towards the wall. Allow a 1/4" gap between the panel and the wall.
- 2.3 Draw a line of chalk between the two boards (see photo 2.3).

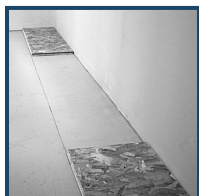


PHOTO 2.3

3 Applying the glue

- 3.1 Cut the end of the adhesive tube at approximately 3/4" from the end, and pierce the interior seal of the nozzle. Apply a film of adhesive of 3/8" width perpendicular to the panel at approximately 2" from the wall and apply a second film of adhesive approximately 24" from the wall. (see photo 3.1)
- 3.2 You are now ready to install the first panel using the chalk line as a guide. Insert each panel well into the adhesive with the rubber mallet. (see photo 3.2)
- 3.3 Apply a third film of adhesive to the outside of the panel in place on the floor and apply a fourth film of adhesive at approximately 24" from the first panel already installed. You are now ready to install your second panel and so on for the first row.
- 3.4 Once the first row of boards is in place, you should stabilize them so that they are not displaced during subsequent installation of the other rows. To do this, simply place a plank of wood measuring 1" x 3" against the wall and on top of the boards, then set each board with two screws (see photo 3.4).



PHOTO 3.1



PHOTO 3.2

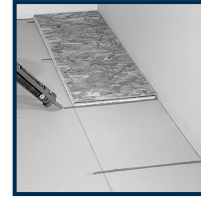


PHOTO 3.3

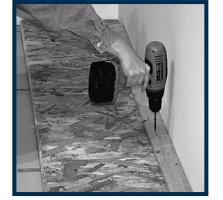


PHOTO 3.4

4 Installing subsequent rows of boards

- 4.1 Apply the adhesive as indicated in step 3.1. You should begin the second row of panels with a half panel in order to cross the joints of each row. The unused part of the panel of the first row can be used to begin the second row. Repeat the procedure for each new row. (see photo 4.1.1)
- 4.2 You may eventually have to walk around a little on your newly installed sub-floor. This shouldn't cause any problems as long as you are careful not to displace the boards laterally. Once the work is complete, it is recommended to allow 48 hours for the glue to dry before installing your chosen floor covering.



PHOTO 4.1

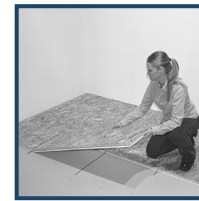
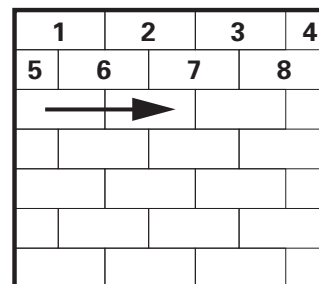


PHOTO 4.1.1

5 Installed floor plan



6 Tips and practical advice

- 6.1 Imperfections in the concrete surface: remove a thin layer of polystyrene using a rough file or a knife to keep all the panels level.
- 6.2 Floor drain: in order to allow for water circulation at the time of infiltration, remove a band of polystyrene approximately 3" wide (see photo 6.2) starting from the outside wall towards the drain.
- 6.3 If you plan to install a floor finished in ceramic, marble, granite or nail hardwood, you will have to make sure that all the InsulFloor panels are well supported on the concrete and there is no movement when you walk on the floor, once the installation is finished. It is recommended, however, to install plywood a minimum of 3/8" thickness in order to stabilise the floor.
- 6.4 If you plan to install a fitted hardwood floor, we recommend installing the panels perpendicularly on the hardwood floor.
- 6.5 It is recommended to always follow the installation directions of the floor coverings.



PHOTO 6.2

7 Building interior walls

- 7.1 It is recommended that the sub-flooring be installed before building walls or interior divisions (non supporting walls). There shouldn't be any contact between the wood and the concrete, and the whole structure should be protected from humidity and rot.

InsulFloor
WWW.INSULFLOOR.COM
1-877-664-6662

