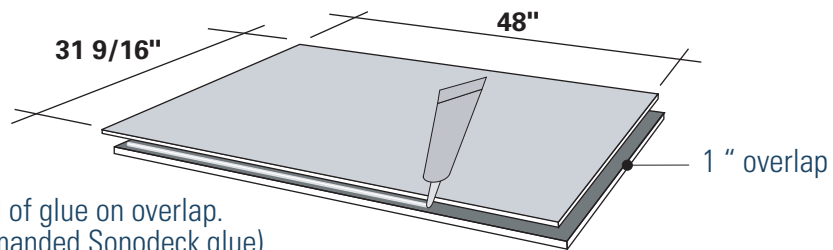
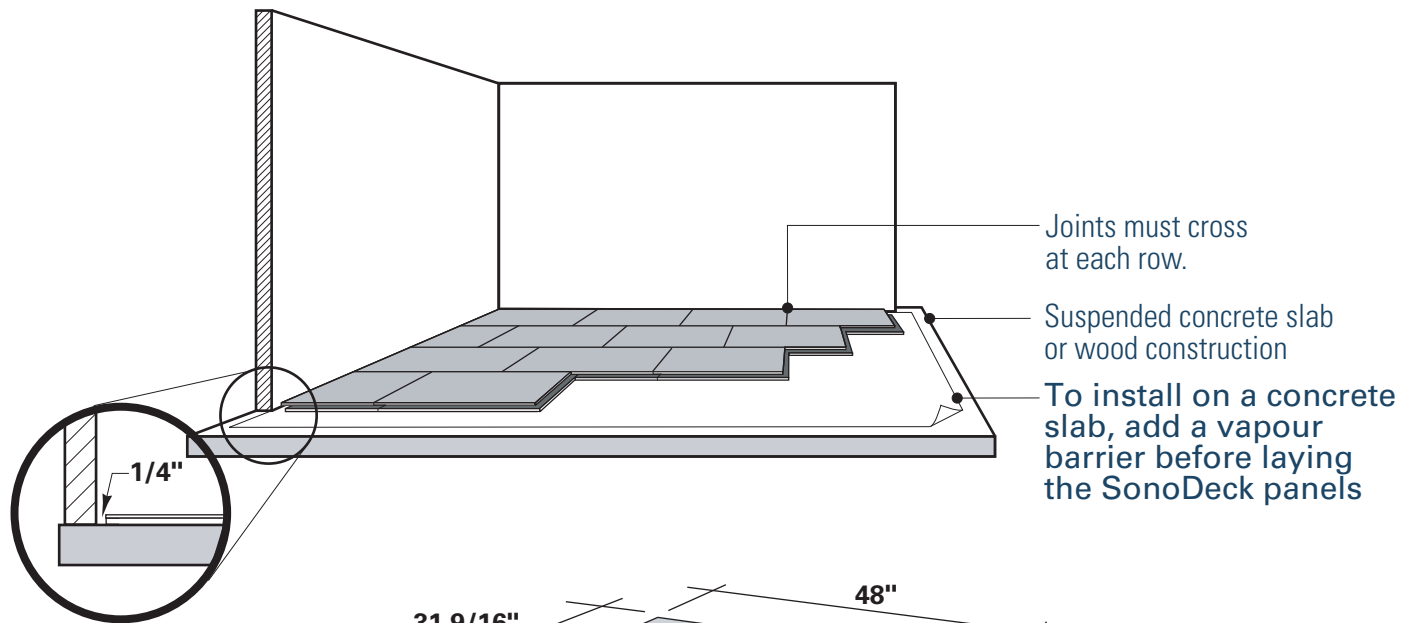
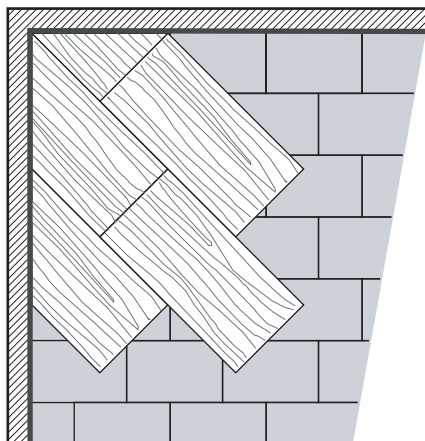


SonoDeck

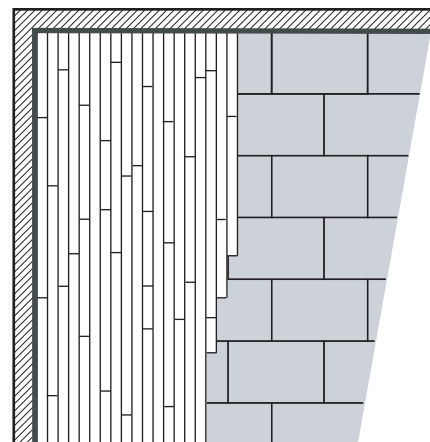
Installation Guide



Bead of glue on overlap.
(Recommended Sonodeck glue)
Use mechanical support on overlap to secure panel.
(3/4" nails or screws)



Additional underlayment



Harwood floor installation

It is important to store the Sonodeck panels flat on the floor (do not store them in a vertical position against a wall or other objects)